

The first two sets of planing forms were made to plane strips for trout rods. Both forms were 60" long with control screws at 5" intervals, and made from $\frac{3}{4}$ " cold rolled steel. The dimensions of the tapered bevels are as follows:

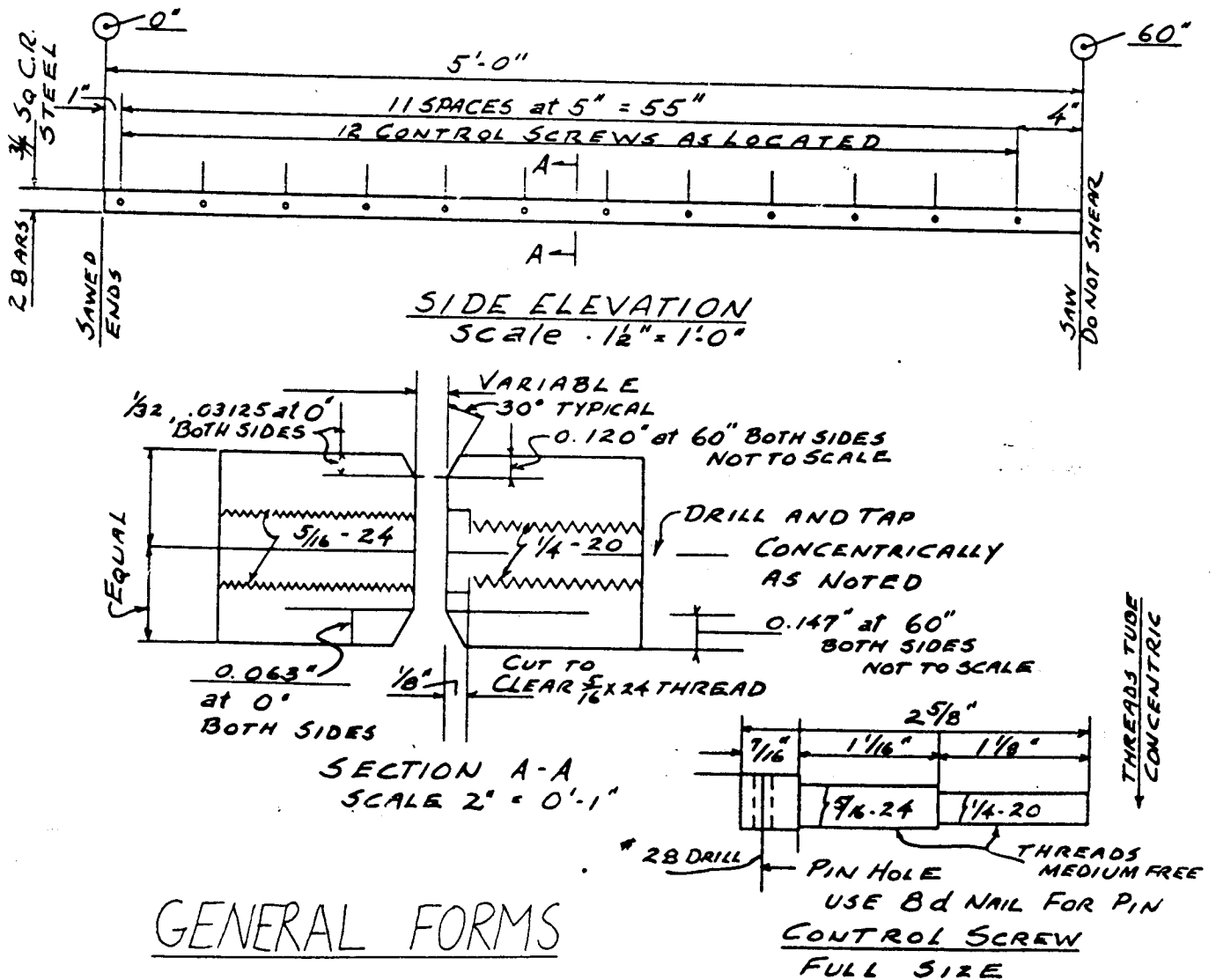
Tip form: small side .031 to .070
large side .060 to .120

Butt form: small side .068 to .092
large side .092 to .120

Garry also designed a set of bars that will cut

strips to conform to almost any taper, and if you decide to have only one set made, this design will do the trick.

If you think you will have an occasion to build a rod which will be tapered to less than .062 at the tip end, you might have your machinist lengthen the bars by another 5", and continue the straight taper down to a depth of approximately .024". These forms will be adequate for most rod builders but there may be some who will want to experiment with inordinately thin tapers for rods of above-average



GENERAL FORMS